



KER & DOWNEY  
ZAMBIA

KING LEWANIKA

VAST HAVENS OF EXCLUSIVITY & SPACE

# KING LEWANIKA

*King Lewanika Lodge, located in the vast grassland expanse of Liuwa Plain National Park, Zambia, is a remote wilderness spanning 3,369 square kilometres (1,301 square miles).*



Widely regarded as Zambia's premier grassland safari destination, Liuwa offers front-row access to Africa's second-largest wildebeest migration, as well as an array of seldom seen African wildlife.

Positioned on the edge of a rare and ancient Mabolo plum and Waterberry woodland, the lodge stares out over the sweeping, seemingly endless plain of Liuwa. Here, dramatic skies, open horizons, and remarkable seasonal movements define a safari experience that is both raw and profoundly beautiful.



## *King Lewanika features*

- Ideally located on the Southern tip of Liuwa Plain to bear witness to Africa's second largest wildebeest migration (in the vicinity of camp between October and May annually)
- Explore the Northern plain, and "Track the Migration" June through September annually (when possible), enjoying a remote Starlit Sleep out.
- Boasting over 385 species of birds, including large flocks of crown cranes and wattled cranes, plus rarities such as Denhams Bustard, black-winged pratincole, Fülleborn's and pink-throated longclaw.
- Variety of predator species including Hyena, Lion, Serval, Side-striped jackal, Cheetah and Wild Dog.

## *Facilities*

- King Lewanika Lodge accommodates a maximum of 15 guests in 5 tented twin safari suites and 1 family suite. All safari suites are hidden beneath a rare, forested island knoll staring out over the endless golden grassy expanse of Liuwa Plain.
- Each safari suite is airy and spacious, with full floor to ceiling views out to the front and out onto the plains. Designed to emphasize silence, space and the epic wilderness, the interior colour palette reflects the golden palette of Liuwa's grasslands.
- Spanning 60 sq. Meters (180 sq. feet) indoors with a 40 sq. Meter (120 sq. feet) verandah, each villa's interior has a King bed (with mosquito net), a central lounge and study area alongside a large bathroom, featuring indoor and outdoor showers.



### Additional Facilities

- The family safari suite is closest to the central lounge area, and spans 80 sq. Meters (240 sq. feet) together with a 40 sq. Meter (120 sq. feet) verandah. The suite shares one bathroom and is configured the same as the Twin suite.
- All rooms have an in-room mini-bar coffee station.
- The central lounge/ bar and dining room of King Lewanika Lodge, perched under the generous shade of a forested edge, is striking, with an entirely open-front, a spacious and breezy area designed to dissolve the barrier between luxury and wilderness.
- The decor intent follows warm, earthy tones, with a number of lounge areas for gathering friends or solitude for peaceful reflection.
- Spa and wellness offering
- Indoor and outdoor dining
- Outdoor fire boma

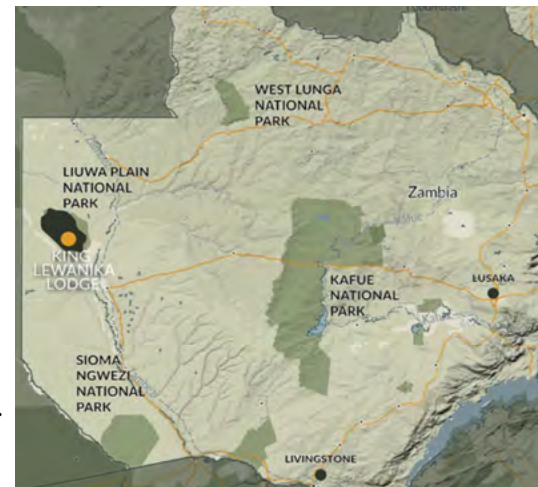
### Excursions

- Game drives/Night drives\*
- Guided, armed walking safaris\*
- Canoe excursion
- Stargazing
- Cultural immersion half daytrip (to Kalabo Town)
- Conservation talks

\* with Zambian wildlife scout.

### Location & access

- Southern forested tip of Liuwa Plain National Park
- Western Province, Zambia.
- King Lewanika is accessed daily from Lusaka or Livingstone directly to Matiamanene Airstrip (a mere ten minutes from camp).



*Where we celebrate havens of vast space while  
not missing the small detail*

